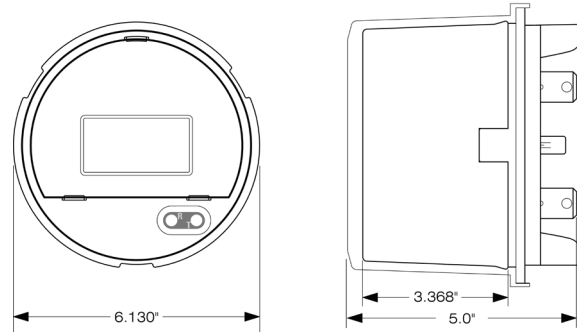


# Nexus® 1262/1272 Socket Meter Quick Start

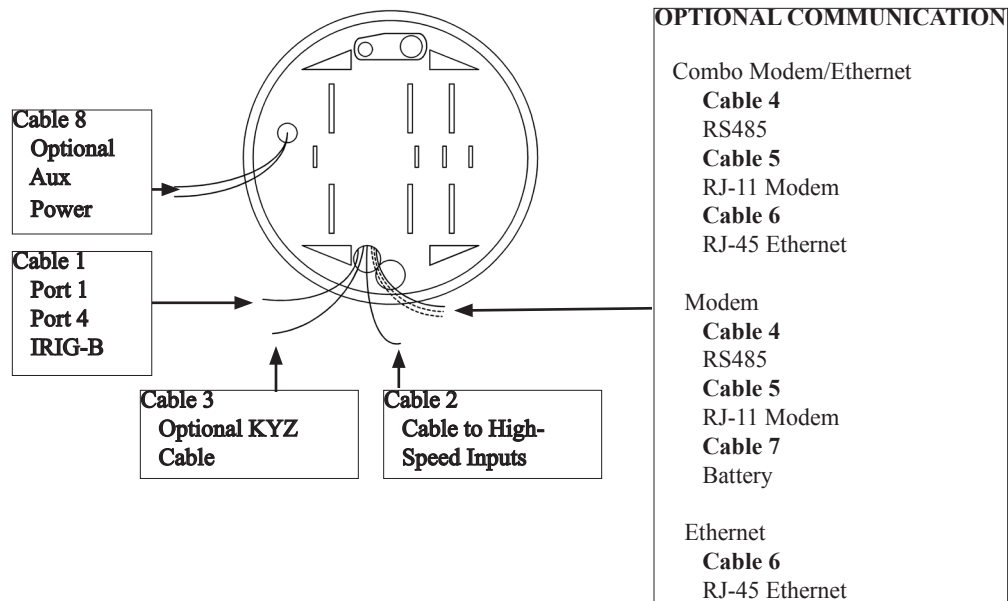
## Hardware Installation:

The Nexus® 1262/1272 Socket meter can be mounted outside or in an enclosed and protected environment, such as in a switchgear cabinet.

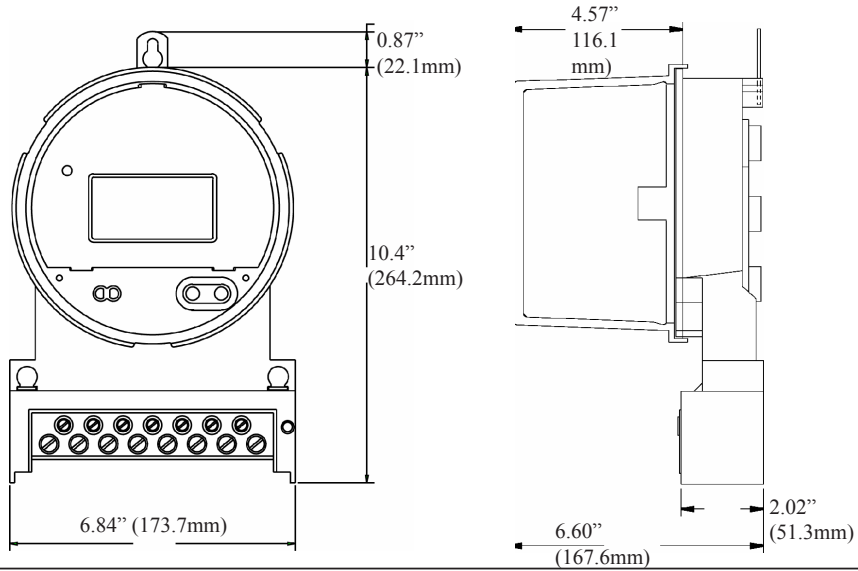


- Examine the labels to verify that the meter you are installing is, in fact, the correct form factor and service type. Make sure that the socket and meter current class ratings are compatible.
- Make sure that all communication and auxiliary power wiring is accessible in case disconnection is required for any reason.
- Before applying power to the meter, install batteries if not installed at the factory and check the connections if they are installed. **POWER MUST BE OFF TO INSTALL THE INTERNAL BATTERY!** To install the Internal Battery, remove the Internal Shroud and place the battery into the battery compartment with the + facing UP. Replace the Internal Shroud. To install the Modem Battery, with the Outer Shroud on the meter, locate the battery cable at the back of the meter and insert the cable connector into the cable. Use the velcro (peel and stick) to attach the battery somewhere outside of the meter.
- Make sure that any communications wiring from the back of the meter is fed through the appropriate openings in your socket to allow for clean connections with external devices.
- Insert the meter into the socket, making sure that the unit blades are firmly within the jaws of the socket.
- Connect external devices to the appropriate communications wiring, as shown below.
- Make sure the meter is functioning properly by running it through a test circuit.

**NOTE: Refer to the Nexus® 1262/1272 Installation and Operation Manual on the enclosed CD for information on Cable color, optional external displays, and optional external Output modules.**

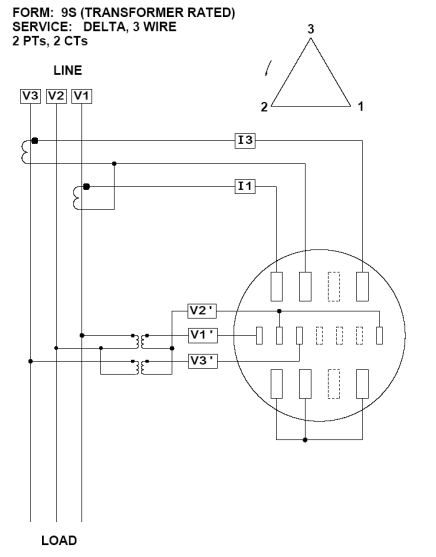
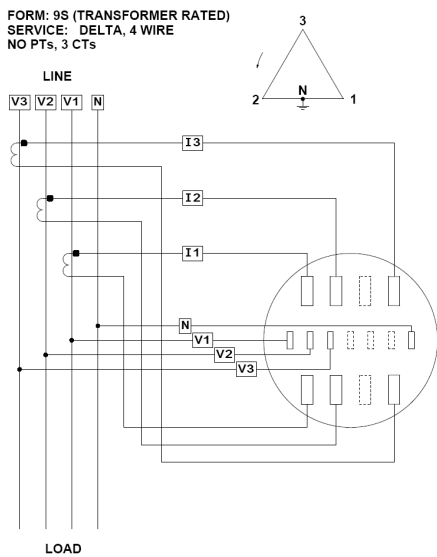
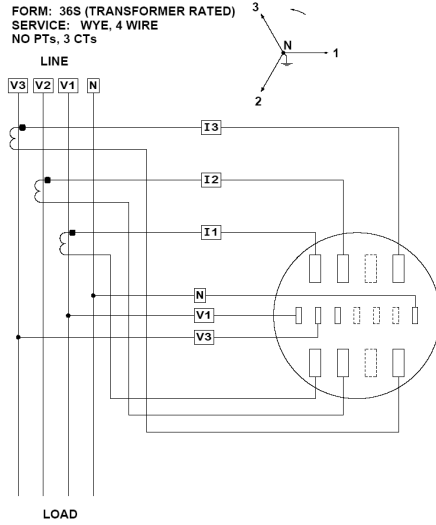
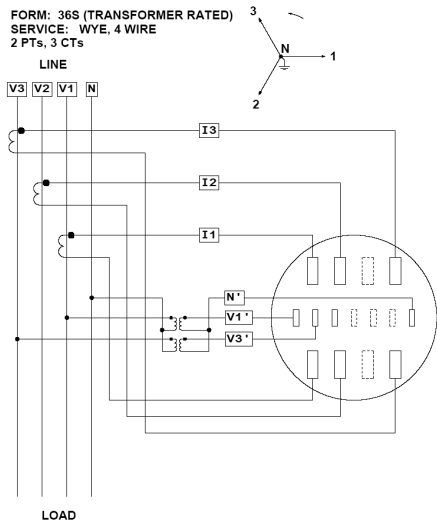


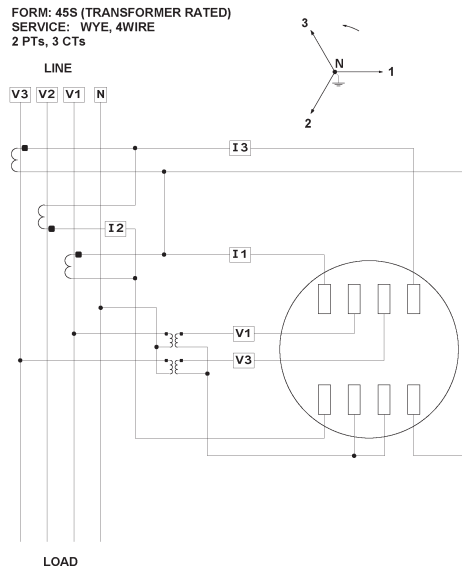
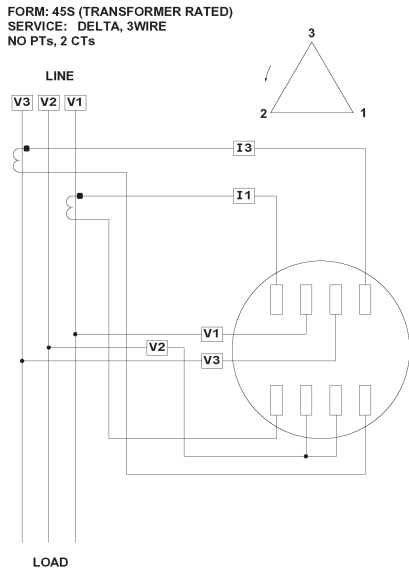
**NOTE:** The 1262/1272 Socket meter can also be inserted into an A-Base. See the dimensions shown on the next page.



**Electrical Installation:**

**NOTE:** Following are some of the possible wiring configurations. See the Installation and Operation Manual on the enclosed CD for additional configurations.





### Programming the Meter through Communicator EXT Software:

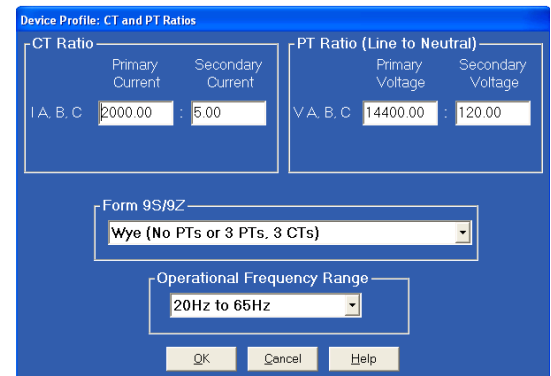
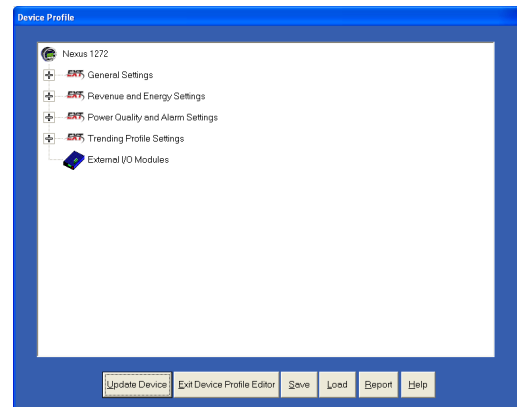
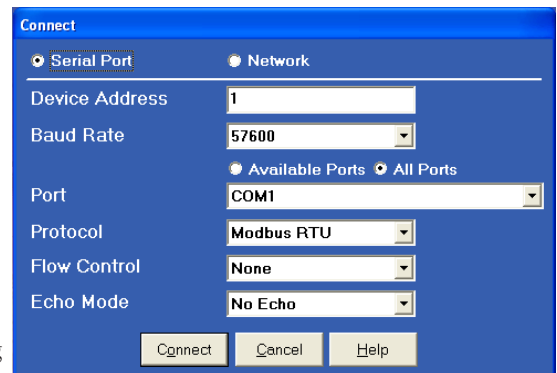
- Using the enclosed CD, install Communicator EXT software on your PC or laptop.
- From the Communicator EXT Main screen, click the **Connect** icon in the Icon bar at the top of the screen.
- You will see the Connect screen, shown on the right.  
**NOTE:** The settings on the right are for a Serial connection using RS485. To connect using the Optical port: set the Baud Rate to 9600; connect the A7Z at one end to the meter's Optical Port; and at the other end connect to a PC's RS232 Serial port (9- or 25-pin). For instructions on configuring a connection using the Internal Modem (INP2) or Network (INP200 or INP202) options, see the *Communicator EXT User Manual*, on the enclosed CD.
- Click Connect. The software will connect to the meter.
- Click the **Profile** icon in the Icon bar at the top of the screen. The Device Profile screen opens. See the screen shown on the right.

#### NOTES:

- Instructions for a few basic settings are given in this Quick Start Guide. Refer to the *Communicator EXT User Manual* on the enclosed CD for additional programming instructions.
- Click **Help**>**Contents** from the Title Bar at the top of the screen to open the User Manual online.

### CT, PT Ratios and System Hookup

- From the Device Profile screen, double-click **General Settings**>**CT, PT Ratios and System Hookup**. The current settings are shown on the screen.
- Double-click one of the settings to open the CT and PT Ratios screen, shown on the right.
- You can enter CT and PT Ratios and select Hookup and Frequency from the pull-down menu.
- Click **OK** to close the screen. Click **Update Device** from the Device Profile screen to save your settings.



## Communication Settings

1. From the Device Profile screen, double-click **General Settings**>**Communications**. The current settings for the meter's Ports are shown on the screen.
2. Double-click one of the Port settings to open the Communications Settings screen, shown on the right.
3. You can set the settings for both Communication Ports, as well as the optional Modem and Network settings. Click **Help** to view instructions for configuring these settings.
4. Click **OK** to close the screen. Click **Update Device** from the Device Profile screen to save your settings.

## Uploading a Device Profile and Naming the Meter

To upload a previously saved Device profile to the meter:

1. From the Communicator EXT Main screen, click the **Device Profile** icon.
2. The Device Profile screen opens. Click the **Load** button at the bottom of the screen.
3. A window opens showing you any saved Device Profiles (these are .nps files). Select the profile you want to load and click **Open**.
4. The saved Device profile is loaded into Communicator EXT.
5. To give the meter a unique name, click **General Settings**>**Labels**.
6. You will see the sub-menu shown on the right. Click **Meter Designation** to open the Labels screen.
7. The Labels screen is shown below, on the right. Enter a unique name for the connected meter in the Meter Designation field and then click **OK**.
8. You can now click the **Update Device** button in the Device Profile screen to upload this Device profile to the connected meter.