

Electro Industries
**SOLID STATE DIGITAL
KILOWATT KILOVAR MONITOR**



- True Bi-Directional Watt and VAR measurement
- High Accuracy, High Resolution Readout
- Combines Two Functions in one Instrument to Maximize Saving Panel Space

Electro Industries LPV series Kilowatt Kilovar monitor was designed to replace two distinct conventional monitors.

The instrument features a highly accurate solid state time division multiplier which performs a true bi-directional WATT/VAR measurement $VI \cos \phi$ and $VI \sin \phi$ with an indication of polarity.

It utilizes a $3\frac{1}{2}$ digit, high intensity L.E.D. for high resolution, accuracy and unambiguous readings.

The instrument is custom calibrated to accommodate CT's, PT's, and the measured range.

The use of common circuitry in a single package provides an economical way to measure kilowatts and kilovars, and in addition, saves panel space.

The Kilowatt Kilovar Monitor is ideally suited to monitor power generation equipment, load monitoring and for power survey.

SPECIFICATIONS COMMON TO ALL UNITS

Accuracy: 47-60 Hz .25% reading \pm .1% of range
 47-1000 Hz .35% of reading \pm 1% of range
 Temperature accuracy: 150 PPM/C°

Power Factor Error: Usable from zero to factor of unity with additional error not more than .5%

Burden: Current: .75va max
 Voltage: .3va max.

Withstanding Capabilities: Current Continuous - 200% rated
 Current Surge - 10x rated
 Voltage Continuous - 150% rated
 Voltage Surge - 10x rated

Temperature: Operating: 0-50° C
 Storage: -55° C — + 85° C

Digital Display: L.E.D. .43" high

Power Requirement: 115v \pm 20% 5VA max.
 (suffxA) 230 \pm 5VA max.

Size: 4.75" W x 3.25"H x 6.50"L
 Cutout: 4.125" x 3.125"

MODELS		
KW Only	KW & KVARs	No. Elements
LP 2000	LPV 2000	1
LP 3000	LPV 3000	1½ *
LP 4000	LPV 4000	2
LP 5000	LPV 5000	2½ *
LP 6000	LPV 6000	3

*½ element will assume a uniform voltage

INPUT RANGES	
Voltage	Current
150 VMAX	5 Amps
300 VMAX	15 Amps
600 VMAX	
Input range should be selected to cover the maximum voltage & current	

METER RANGES

F.S. Reading **
1. 1.999
2. 19.99
3. 199.9
4. 1999

* Meter range should be selected based on the maximum power.

** Face plate is available for kilowatt/kilovar or Megawatt/megavar.

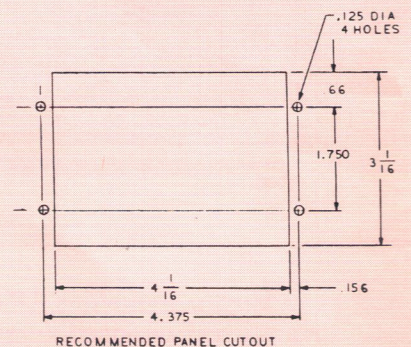
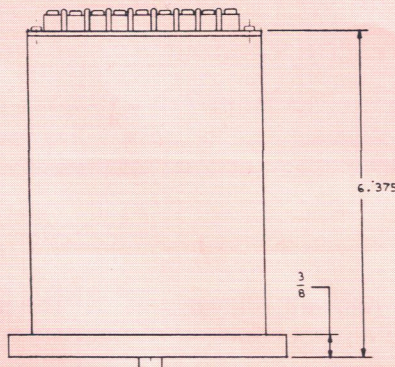
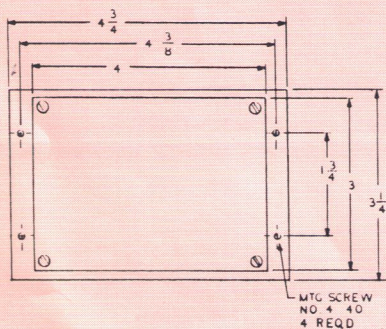
ORDERING INFORMATION

When ordering a power monitor, the following information is required:

LP V for Var	Models 2000 3000 4000 5000 6000	Frequency 50 60 400	Voltage Range 150 300 600	Current Input 5 15	Range No. 1. 2. 3. 4.	pt ratio ct ratio
-----------------	--	------------------------------	------------------------------------	--------------------------	-----------------------------------	----------------------

OPTIONS

Power input 230V (add suffix A)



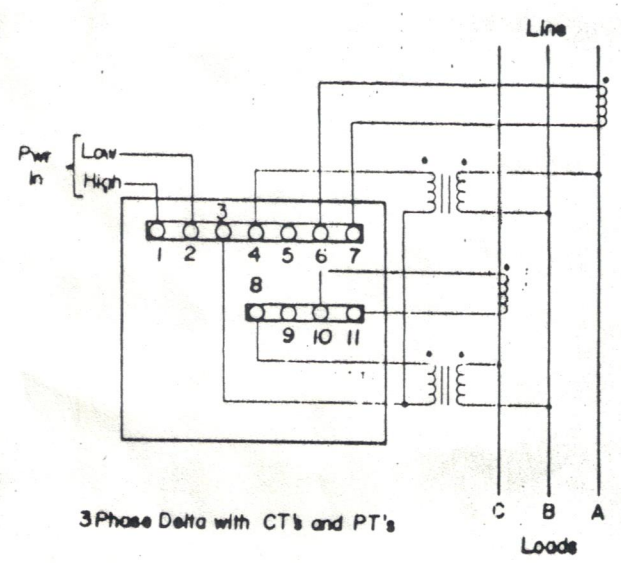
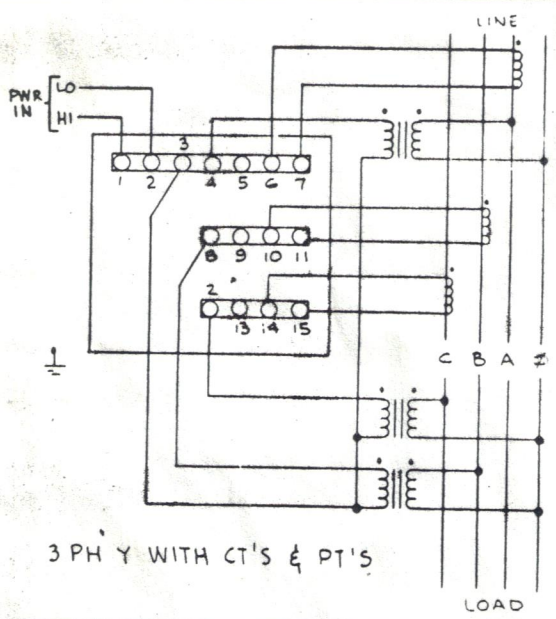
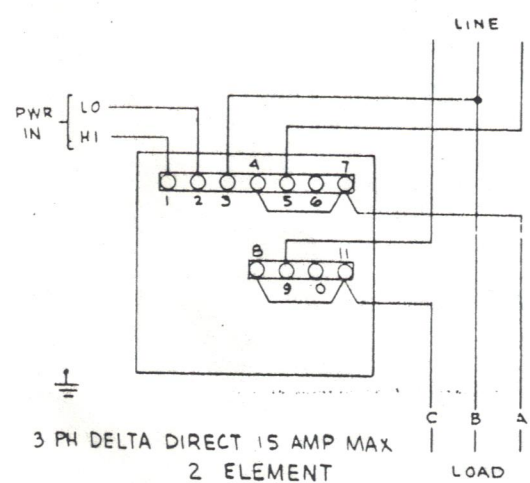
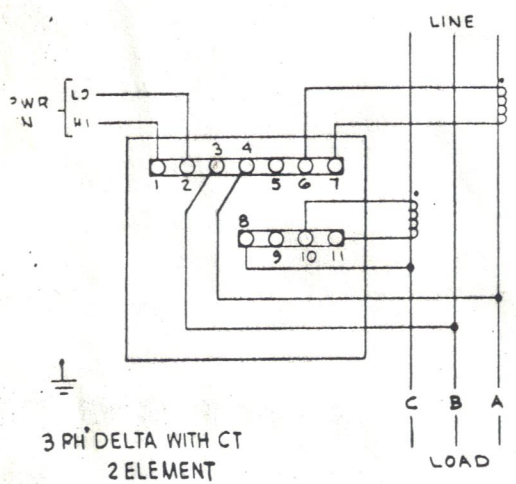
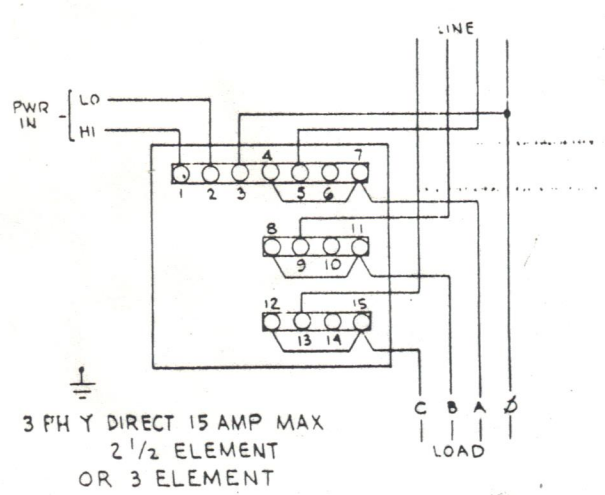
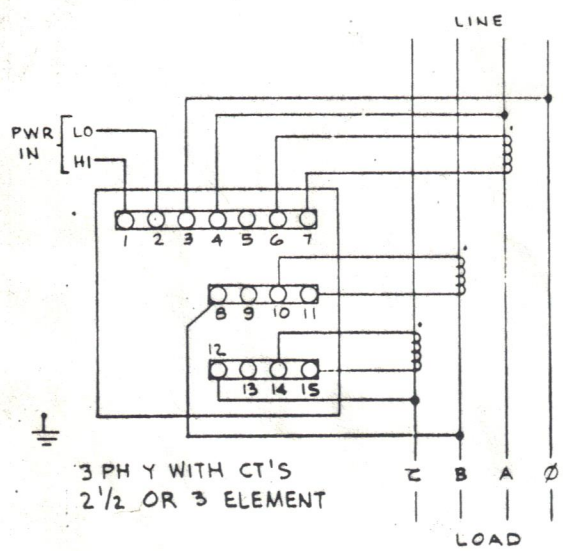
Electro Industries

Div. of E.I. Electronics Inc.

(516) 334-0870

1800 Shames Drive, Westbury, N.Y. 11590

+ 888 - 013



V3 = 600V NR = NO RESET
V2 = 300V
V1 = 120V