

## A-2406 Chassis Retrofit Style Selection Table

A-2406 - (M-7679 Smart String + CSR) - C 19 B O

Pole Mount (for installation in existing Eaton Cooper cabinets)	C	Mounting Type	Customer Specific Request (CSR)	O	None
	Yard Mount (for installation in existing Eaton Cooper cabinets) <td>Y</td> <td>O</td> <td>None</td> <td>X</td> <td>CSR (Add number of approved CSR for 2406 hardware only)</td>			Y	O
Substation Panel Mount <td>P</td> <td rowspan="4">Application / Interface</td> <td rowspan="4">Battery &amp; Power Interface</td> <td>B</td> <td><b>M-2035 Battery Interface Module (to interface with 24 Vdc third-party Power Supply / Battery Charger)</b></td>	P	Application / Interface	Battery & Power Interface	B	<b>M-2035 Battery Interface Module (to interface with 24 Vdc third-party Power Supply / Battery Charger)</b>
Substation 19" Rack Mount <td>S</td> <td>P</td> <td>Battery Charger / Power Supply (for Pole Mount Cabinet applications)</td>	S			P	Battery Charger / Power Supply (for Pole Mount Cabinet applications)
None	00			S	Substation Interconnection Power Supply (for Substation 19" Rack 26-Pin applications)
14-Pin	14			Y	Power Supply (for Yard Mount Cabinet applications)
<b>19-Pin</b>	<b>19</b>				
26-Pin	26				

# A-2406 - Retrofit Solutions For Cooper Form 6 Recloser Controls

Enables fast and efficient installation of the M-7679 R-PAC into existing pole-mounted or yard-mounted control cabinets, as well as substation panels or racks. This solution is specifically designed to retrofit Eaton Cooper Form 6 Recloser Controls, helping extend the operational life of existing reclosers while minimizing installation complexity and downtime.



- Provides easy direct mechanical replacement of the Eaton Cooper Form 6 recloser control in existing installations.
- Minimizes or eliminates expensive rewiring of I/O signals by interfacing with the existing electronics.
- Designed for rapid deployment, the unit can be installed in under 30 minutes in most common setups, including pole-top cabinets, substation yards, and panel or rack-mounted environments.
- Renew and extend the life of existing 14-, 19-, or 26-Pin Nova reclosers and in most cases be able to:
  - » Do more (FLISR).
  - » See more (PQ Monitoring).
  - » Learn more (Post-operation analysis tools, data logging, real-time status monitoring for bench testing and troubleshooting).

## BECKWITH ELECTRIC

6190 118th Avenue North • Largo, Florida 33773-3724 U.S.A.

PHONE (727) 544-2326

beckwithelectric@hubbell.com

www.beckwithelectric.com

ISO 9001:2015



The A-2406 retrofit from Beckwith Electric pairs the M-2406 Adapter Chassis with the M-7679 R-PAC (Figure 1) to replace Eaton Cooper Form 6 Type F6-P2A/B controls (serials >10,000 or starting with CP57) for 14- and 19-pin reclosers, and Triple-Single controls for 26-pin reclosers.

Designed to quickly retrofit existing pole-mounted or substation cabinets and substation panels or racks, the A-2406 uses existing wire harnesses and mounting hardware to deliver full power and control functionality for Eaton Cooper Nova Reclosers.

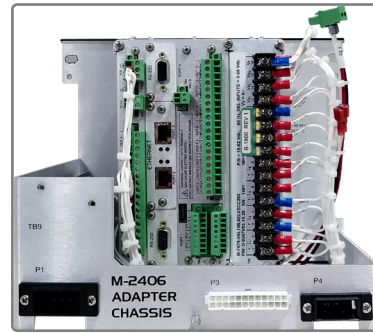


Figure 1 A-2406 Solution - Rear View

### Installation Applications - Outdoor Cabinets

**Type: Pole Mount [C]**

**Location:** Outside of substations (Figure 2)



Figure 2 A-2406, Pole-Mount Application Example

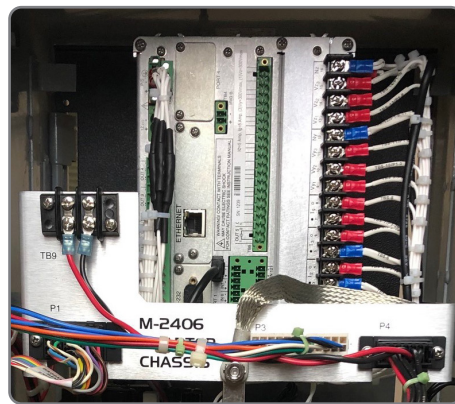


Figure 3 A-2406, Pole-Mount Example - Rear Connections

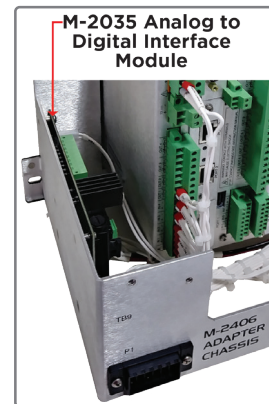


Figure 4 M-2035 Analog to Digital Interface Module

**Type: Yard Mount [Y]**

**Location:** Substation yards (Figure 5)



Figure 5 A-2406, Yard-Mount Application Example

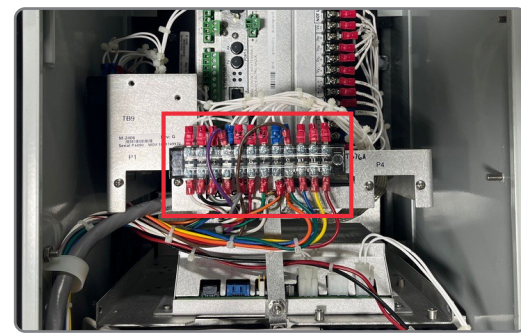


Figure 6 A-2406, On-Chassis Terminal Strip

### Installation Applications - Indoor Infrastructure

**Type: Panel Mount [P]**

**Location:** Substation panel cutout (Figure 7)



Figure 7 A-2406, Panel-Mount Application Example

**Type: Rack Mounted [S]**

**Location:** 5U space in substation standard 19" network rack (ex. Figure 8)

**M-7679 Control Form:** Vertical



Figure 8 A-2406, Rack-Mount Application Example

### Physical

#### A-2406 Dimensions by Application

**Pole and Yard mount:** 8.50" high × 10.75" wide × 7.84" deep (21.59 cm × 27.31 cm × 19.91 cm)

**Panel Mount:** 8.75" high × 10.25" wide × 10" deep (22.23 cm × 26.04 cm × 25.40 cm)

**Rack mount:** 8.75" high (5U) × 19" wide × 6.22" deep (22.23 cm × 48.26 cm × 15.80 cm)

#### Weights

**A-2406 (M-2406 & M-7679 R-PAC):** 6 lbs, 12 oz (3.06 kg)

**M-2406:** 1 lb, 10 oz (0.75 kg)