

## M-2406 Chassis Retrofit Style Selection Table

M-2406-C L 14 P B-0

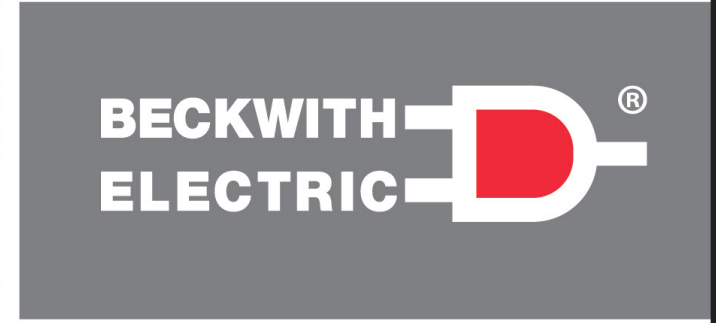
Pole Mount or Yard Mount (For installation in existing Eaton Cooper cabinet)	C	Type (Solution Mounting)
Substation Panel Mount	S	
Substation Rack Mount (Requires B-1612)	H	
Substation Rack Mount with Test Switch opening (Requires B-1612-01)	T	
Low (18-60 Vdc)	L	IED Control Power Supply
High (90-315 Vac/Vdc)	H	
Direct Wired (Connections to be made directly to the back of the IED)	DW	Application (Interface With Recloser)
14-Pin Eaton Cooper cabinet	14	
19-Pin Eaton Cooper cabinet	19	
26-Pin Eaton Cooper cabinet	26	
Terminal Block (Connections to be made directly to a Terminal Block on the M-2406 Chassis)	TB	Recloser Voltage Sensing
None	0	
External (3) PTs	P	
External (6) PTs	Q	
Internal (3) IVS Sensors (VTC Ready)	S	
Internal (6) IVS Sensors	T	

Customer Specific Request (CSR)	0	None
	X	CSR (Add number of approved CSR for 2406 hardware only)
Accessory	0	None
	B	M-2035 (24 Vdc) Battery Monitor to connect to an external battery for battery monitoring, charging mode status, load testing, and remote shutdown/wake-up via IPScm
	P	M-2032B (24 Vdc) Cabinet Power Supply / Battery Charger (Suggested for faulty power supply boards using station battery voltage)
	D	AC/DC – DC Converter*: Input: 110-240 Vac, 48-125 Vdc nominal (40-140 Vdc); Output: 24 Vdc; Power: 200 W
	C	Tray-mounted version of the M-2032B*, conformally coated, no enclosure

\* : Consult Factory for availability.

# M-2406 – Retrofit Solutions For Cooper Form 6 Recloser Controls

**Adapts M-7679 R-PAC to Retrofit Eaton Cooper Form 6 Controls in Existing Cabinets, Panels or Racks interfacing with 14, 19 or 26-Pin Nova Reclosers**



- Provides easy direct mechanical replacement of the Eaton Cooper Form 6 recloser control in existing installations
- Eliminates expensive rewiring of I/O signals by interfacing with the existing electronics
- Installable in less than 30 minutes in all standard locations including pole top cabinets, substation yards, and substation panels or racks
- Renew and extend the life of existing 14, 19 or 26-Pin Nova reclosers and in most cases be able to:
  - » Do more (FLISR)
  - » See more (PQ Monitoring)
  - » Learn more (Post operation analysis tools, data logging, real time status monitoring for bench testing and troubleshooting)

**BECKWITH ELECTRIC**  
 6190 118th Avenue North • Largo, Florida 33773-3724 U.S.A.  
 PHONE (727) 544-2326  
 beckwithelectricsupport@hubbell.com  
 www.beckwithelectric.com  
 ISO 9001:2015



Pairing the M-2406 Adapter Chassis with the M-7679 R-PAC ([Figure 1](#)) enables a direct replacement of Eaton Cooper Form 6 Type F6-P2A/B controls (serials >10,000 or starting with CP57) for 14- and 19-pin reclosers, and Triple-Single controls for 26-pin reclosers.

Designed to quickly retrofit existing pole-mounted or substation cabinets and substation panels or racks, the M-2406 uses existing wire harnesses and mounting hardware to deliver full power and control functionality for Eaton Cooper Nova Reclosers.

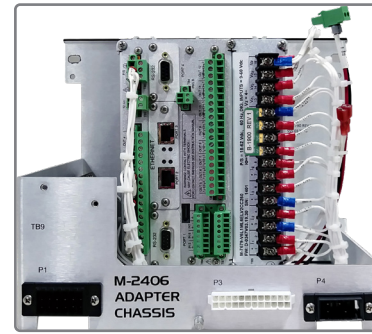


Figure 1 M-2406 Pole Mount Adapter Chassis Rear View

## Installation Applications - Outdoor Cabinets

Type: Pole Mount [C]

Location: Outside of substations ([Figure 2](#))



Figure 2 M-2406, Pole-Mount Application Example

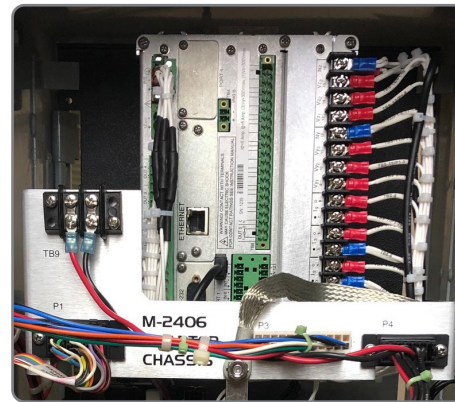


Figure 3 M-2406, Pole-Mount Example - Rear Connections

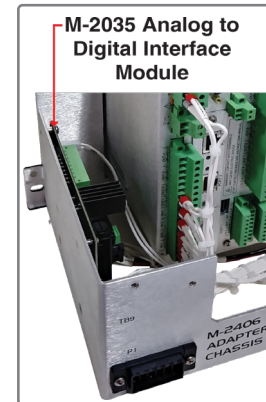


Figure 4 M-2035 Analog to Digital Interface Module

Type: Yard Mount [C]

Location: Substation yards ([Figure 5](#))



Figure 5 M-2406, Yard-Mount Application Example

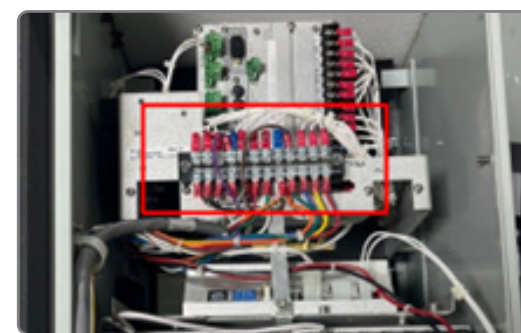


Figure 6 M-2406, On-Chassis Terminal Strip

## Installation Applications - Indoor Infrastructure

Type: Panel Mount [S]

Location: Substation panel cutout ([Figure 7](#))



Figure 7 M-2406, Panel-Mount Application Example

Type: Rack Mounted [H or T]

Location: 3U space in substation standard 19" network rack (ex. [Figure 8](#))

M-7679 Control Form: Horizontal



Figure 8 M-2406, Rack-Mount Application Example, Option H



Figure 9 M-2406, Rack-Mount with Test Switch Application Example, Option T

## Physical

**M-2406 Size with M-7679 R-PAC:** 8.50" high x 10.75" wide x 7.84" deep (21.59 cm x 27.31 cm x 19.91 cm)

**Approximate Weight:** 1 lb, 10 oz (0.75 kg)

**Approximate Weight with M-7679 R-PAC:** 6 lbs, 12 oz (3.06 kg)

**Panel-mount applications:** Fits existing Eaton Cooper Form 6 panel cutout

**Rackmount applications:** Horizontal M-7679 size with B-1612 rack adapter – 5.25" high (3U) x 19" wide x 6.22" deep (13.3" x 48.26 cm x 15.8 cm)